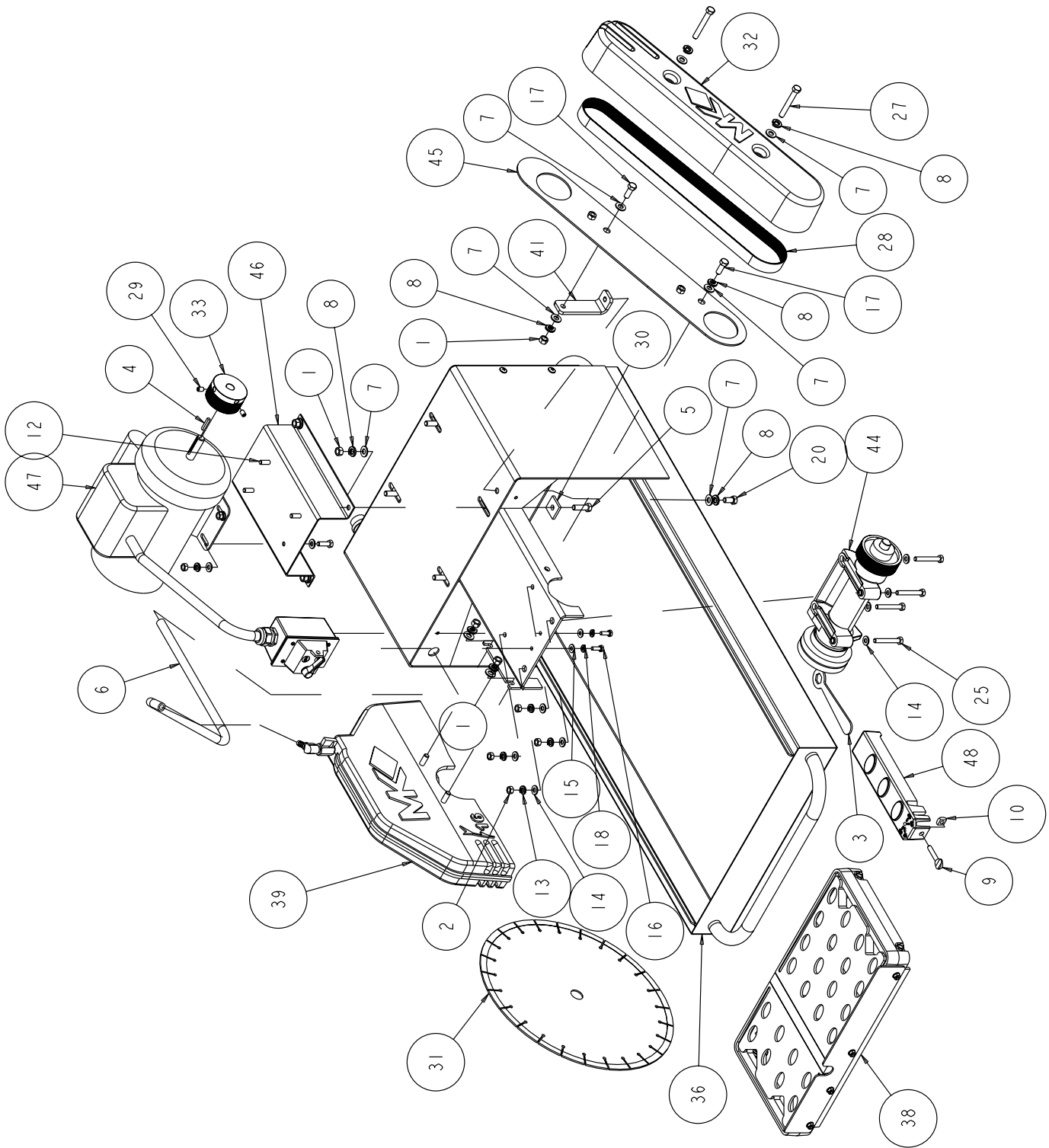
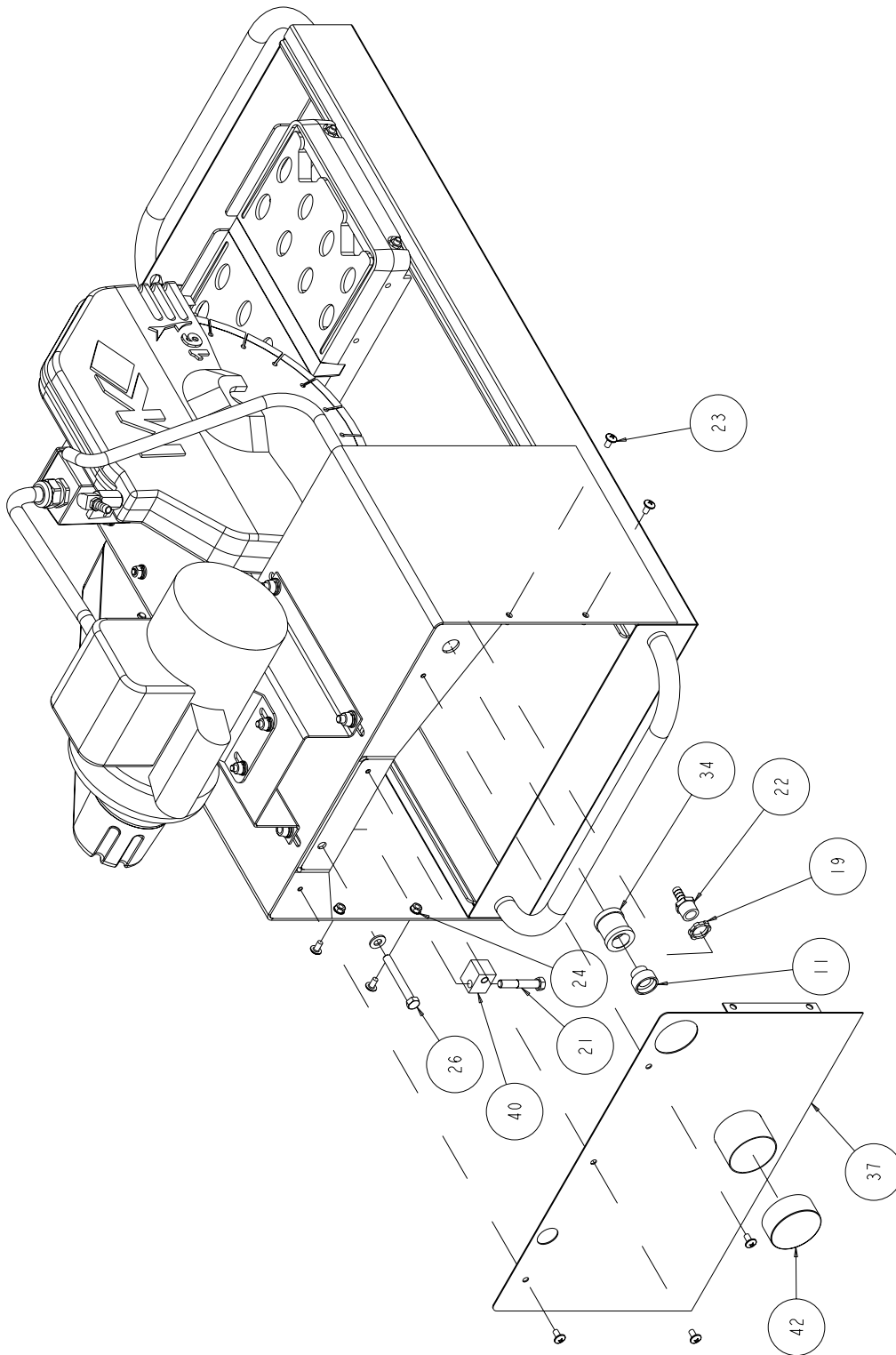


FIGURE 1 - MK-1280 PAVER SAW - P/N 167492



ITEM	DESCRIPTION	PART#	QTY
1	NUT, 3/8 16 HEX	101188	7
2	NUT, HEX, 5/16 - 18	101196	8
3	WRENCH, 3/4 BOX END	134056	1
4	KEY, 3/16 SQ X 1-1/8	150344	1
5	SCREW, 3/8 - 16 X 1 - 1/4 HEX HEAD CAP	150774	3
6	HOSE, WATER VINYL 3/8 X 1/2, 30"	150845_18	1
7	WASHER, 3/8 SAE FLAT	150923	13
8	WASHER, 3/8 SPLIT LOCK	150925	11
9	SCREW, THUMB 5/16 - 18 X 1 - 1/2	151155	1
10	NUT, SQUARE 5/16 - 18	151156	1
11	FITTING, 1/2 MNPT X 3/4 FNH	151322	1
12	SCREW, HEX HD, 5/16 - 18 X 1	151743	4
13	WASHER, LOCK, SPLIT, 5/16	151747	4
14	WASHER, FLAT, SAE, 5/16	151754	8
15	WASHER, 1/4 SAE, FLAT	151915	4
16	SCREW, HEX HD, 1/4 - 20 X 3/4	152370	2
17	SCREW, HEX HD CAP, 3/8 - 16 X 1	152507	2
18	WASHER, 1/4 SPLIT LOCK	152591	2
19	NUT, LOCK STEEL 1/2" NPT	152729	1
20	SCREW, HEX, 3/8 - 16 X 3/4	153527	1
21	SCREW, 3/8 - 16 X 2 - 1/4 HEX HEAD	153529	1
22	FITTING, 1/2 MNPT X 3/8 BARB	153653	1
23	SCREW, 1/4 - 20 X 1/2 TRUSS HEAD	153880	7
24	NUT, HEX W/WSHR, 1/4 - 20	153941	4
25	SCREW, HEX, 5/16 - 18 X 2 - 1/4	153951	4
26	BOLT, HEX HEAD TAP, 3/8 - 16 X 3	155830	1
27	SCREW, HEX HD CAP, 3/8 - 16 X 2 - 3/4	156774	2
28	BELT, 10K430	156837	1
29	SCREW, 5/16 - 18 X 3/8 SOCKET HEAD SET	157084	2
30	WASHER, SQR, 7/16 X 1 - 1/4 X 3/16	157567	3
31	BLADE, MK-414PBSL 16 X 125 X 1	160765	1
32	BELT GUARD, OUTER, ARBOR, COMP	160888	1
33	PULLEY, 10J28 X 5/8 BORE	160949	1
34	FITTING, 1/2 NPT COUPLER	164208	1
35	MASONRY LABEL SHEET (NOT SHOWN)	166011	1
36	FRAME, MAIN MK-1280	166555	1
37	BACKSPLASH, MK-1280	166576	1
38	ASSY, TABLE, MK-1280	166577	1
39	ASSY, BLADE GUARD, 16", MK-1280	166581	1
40	GUIDE, TENSION	167750	1
41	BRACKET, BELT GUARD	167763	1
42	CAP, VACUUM	167777	1

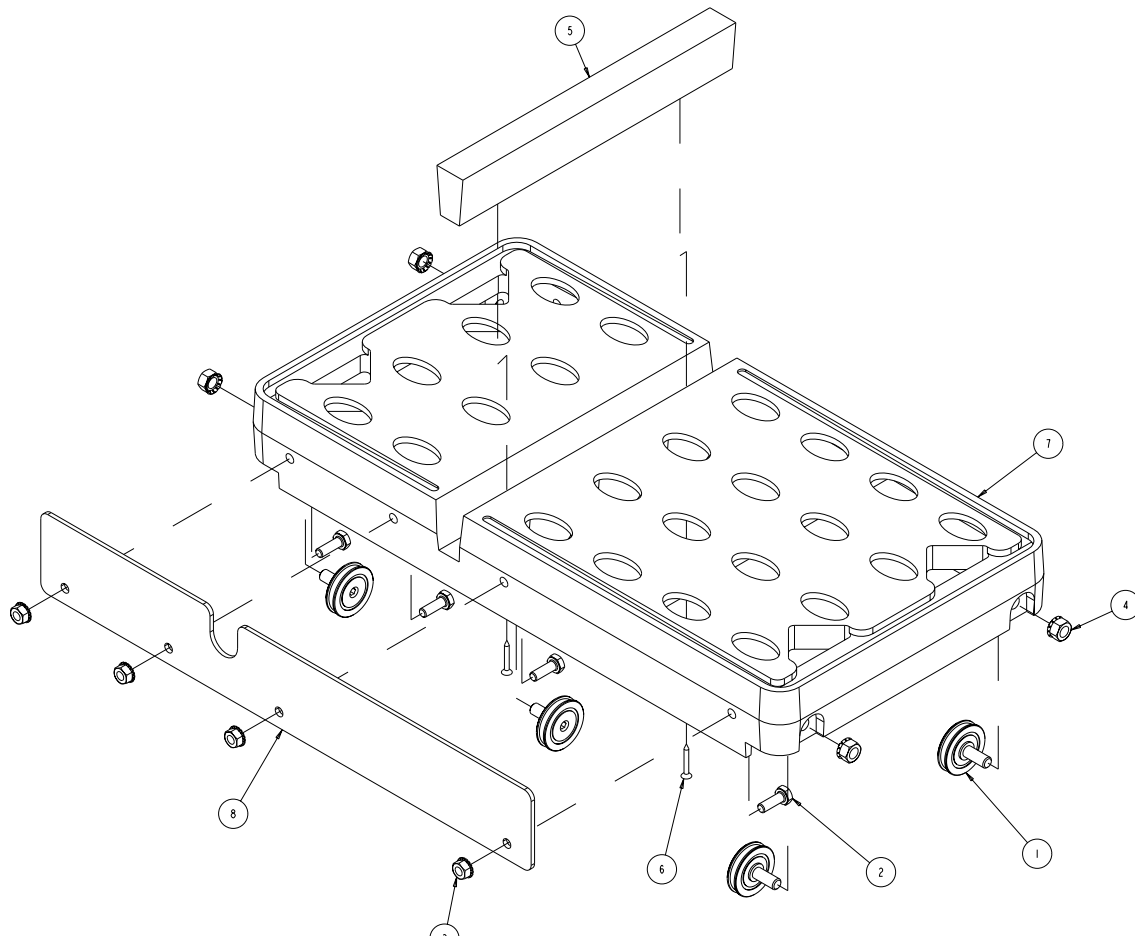
FIGURE 2 - MK-1280 PAVER SAW - P/N 166561



**FIGURE 2 - MK-1280 PAVER SAW - P/N 166561**

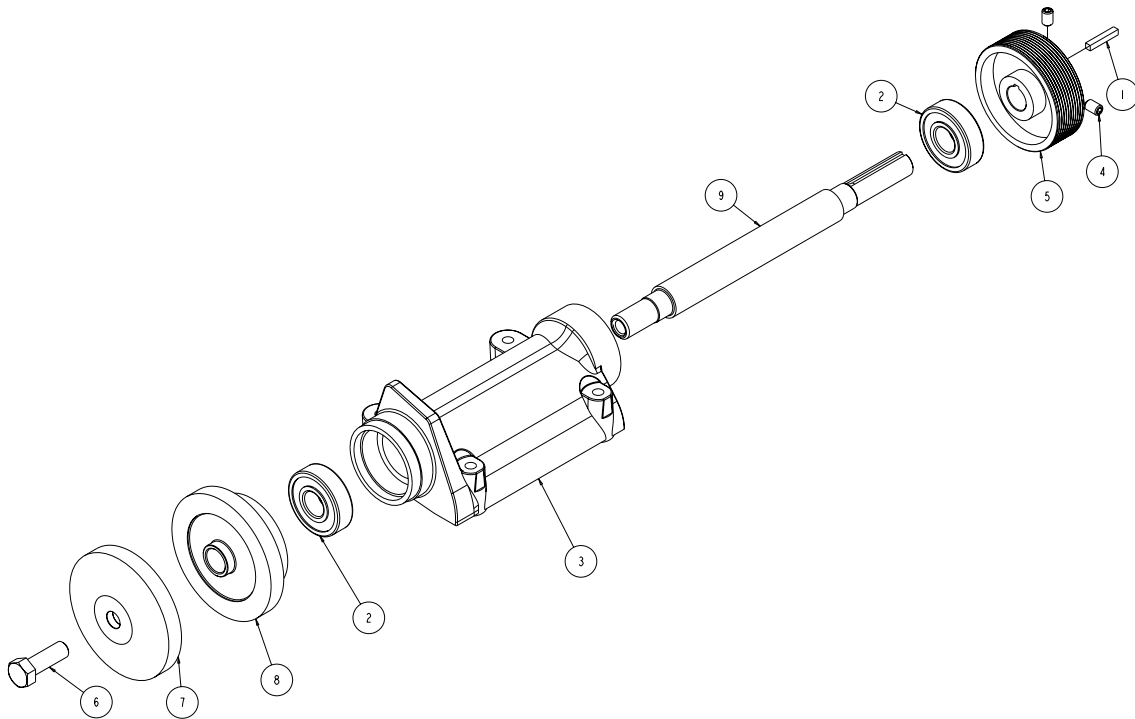
ITEM	DESCRIPTION	PART#	QTY
43	OWNERS MANUAL, MK-1280	168786	1
44	ASSY, ARBOR, ELEC 1280	168712	1
45	GUARD, BELT, INNER	168713	1
46	MOUNT, MOTOR, ELEC 1280	168714	1
47	MTR, 2HP 115/230V 60 HZ	231095	1
48	CASTING, SQUARING ARM-COMP	231276	1

FIGURE 3 - ASSY, TABLE - P/N 166577



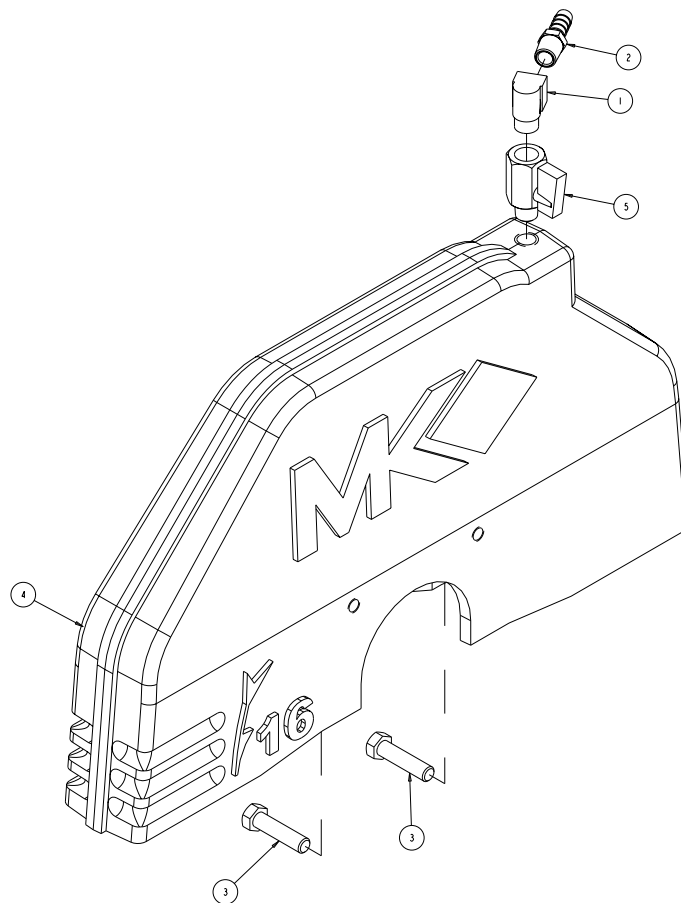
ITEM	DESCRIPTION	PART#	QTY
1	WHEEL, CONVEYOR CART	133090	4
2	SCREW, HEX HD, 1/4 - 20 X 3/4	152370	4
3	NUT, HEX W/WSHR, 1/4 - 20	153941	4
4	NUT, HEX, TW, 5/16 - 18	153942	4
5	WOOD STRIP, TABLE INSERT	158283	1
6	SCREW, DRYWL, FLAT HD, #6X1	159906	2
7	CASTING, TABLE, MK-1280	165398	1
8	BACKSTOP, TABLE	166584	1

FIGURE 4 - ASSY, ARBOR - P/N 166579



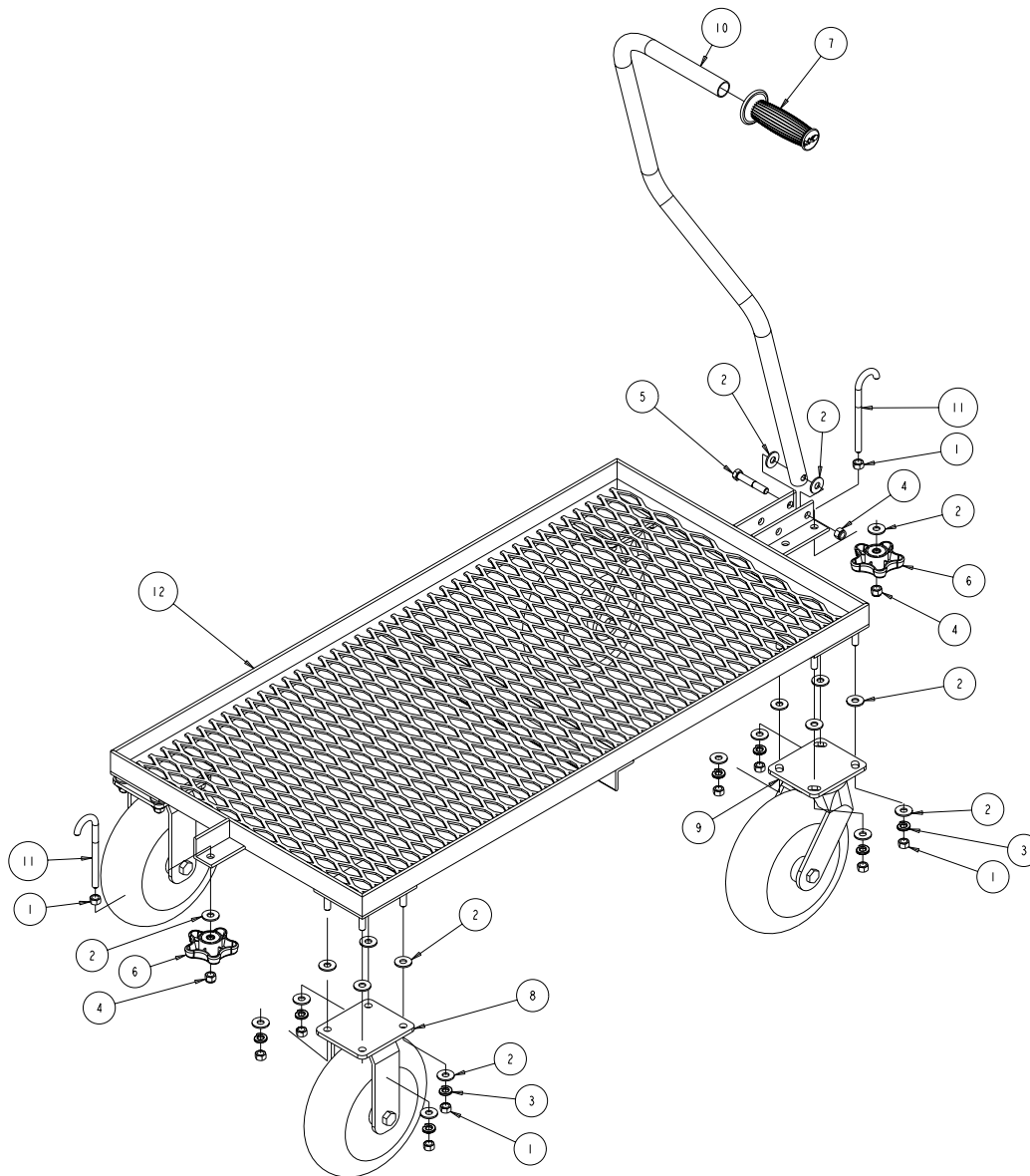
ITEM	DESCRIPTION	PART#	QTY
1	KEY, 3/16 SQ X 1 - 1/8	150344	1
2	BEARING, ARBOR HOUSING	154594	2
3	CASTING, 2000/5000 ARBPR - COMP	154637	1
4	SCREW, 5/16 - 18 X 3/8 SOCKET HEAD SET	157084	2
5	PULLEY, 10J28 X 5/8 BORE	157466	1
6	SCREW, 1/2 - 13 X 1-1/12 HEX HEAD, LEFT HAND	160818	1
7	FLANGE, OUTER, MASONRY, 4"	161304	1
8	FLANGE, INNER, MASONRY, 4"	161305	1
9	SHAFT, BLADE	166586	1

FIGURE 5 - ASSY, 16" BLADE GUARD - P/N 166581



ITEM	DESCRIPTION	PART#	QTY
1	ELBOW, 1/4 MNPT STREET	154615	1
2	FITTING, 1/4 MNPT X 3/8 BARB	154659	1
3	SCREW, HEX HEAD 3/8 - 16 X 1 - 1/2 LG.	156656	2
4	CASTING, BLADE GUARD, 16" - COMP	166558	1
5	VALVE, BALL, 1/4"M TO 1/4"F	231248	1

FIGURE 6 - ASSY, CART - P/N 167437



ITEM	DESCRIPTION	PART#	QTY
1	NUT, 3/8 - 16 HEX	101188	18
2	WASHER, FLAT, USS, 3/8	101360	36
3	WASHER, 3/8 SPLIT LOCK	150925	16
4	NUT, 3/8 - 16 NYLOK HEX	152505	3
5	SCREW, 3/8 - 16 X 2-1/4 HEX HEAD	153529	1
6	KNOB, ADJ MK1408 5-PRONG -RAW	155239	2
7	GRIP, HANDLE 7/8 ID	158608	1
8	CASTER, 10" RIGID	167772	2
9	CASTER, 10" SWIVEL	167773	2
10	HANDLE, CART	167774	1
11	BOLT, HOOK, 38 - 16 X 5	167775	2
12	FRAME, CART	167776	1